

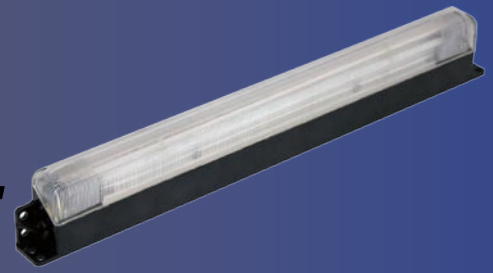
Manufactured by:



NEW

Cold Cathode Compartment Light

**NEW Waterproof design &
stronger high-impact lens**



Perfect for roll-up door, interior cab, and storage compartment applications.



Can be mounted horizontally or vertically. Slim profile designed to fit into tight spaces.



High quality lens will not yellow or break under normal impact.

Introducing the new "Cold Cathode" Compartment light

- Another breakthrough lighting technology from Havis-Shields
- Super efficient, cold cathode fluorescent technology features:
- Nearly endless 18,000 hour lamp life
- "Daylight" quality 4500K color temperature light
- Draws only 0.6 amps at room Temperature, 1.6 amp max
- Instant "on", reaches full light output in seconds in all environments
- Low profile, space saving design (14"L, 1"W, 1.94"H)
- High quality lens will not yellow or break under normal impact
- Perfect for roll-up door, interior cab, and storage compartment applications
- 5-year complete fixture warranty



KR-CCL-1



KR-CCL-2



KR-CCL-3

Part Number	Description
KR-CCL-1	Cold Cathode Compartment Surface Mount Light with 12" Lead and Switch
KR-CCL-2	Cold Cathode Compartment Surface Mount Light with Dual Wire Leads and Connectors
KR-CCL-3	Cold Cathode Compartment Surface Mount Light with no Switch

Call Today for Quick Delivery 1-800-524-9900 or visit www.havis.com