



# MEGA TECH

## *PUBLIC SAFETY EQUIPMENT 2016*



For over 25 years, the nation's top agencies have turned to Mega-Tech to provide total vehicle solutions for the Public Safety and Construction industries. Our products include Emergency Vehicle Lighting, Speed Enforcement, Integrated Vehicle Solutions, Fleet Upfitting and In-Car Video Systems to name just a few. Mega-Tech is capable of providing a total package solution for virtually all of your technical requirements. We offer sales, service and installation facilities across Canada. Our selection of only the latest technologies and proven manufacturers allows us to provide the most comprehensive, one stop packages available in the market today. Our factory trained technicians offer thorough warranty support and repair service on all of the products that we offer.

Please take the time to visit our website for a full overview of the products and services that are provided by Mega-Tech.

## **WHELEN®** Legacy™ Series - All DUO+™ Super-LED® lightbar



The Legacy was designed from the rugged extrusion up to maximize the performance of the hottest LED on the market. All warning lightheads are True DUO+, whether one color or two. Each segment can be operated independently or at the same time, creating the first true DUO lightbar, without loss of intensity. Ideal when you want to run a Traffic Advisor™ and rear warning at the same time, giving the performance of two lightbars in one.



## **WHELEN®** Liberty II™ Series - Super-LED Lightbar



Redesigned and reinvented for exactly what your fleet needs, the new Liberty II builds on the Liberty's reputation for excellent reliability and performance. With improved optic design and technology, the next generation of Whelen's Liberty Lightbar is tougher than ever.

Newly designed all LED lightbar built from the ground up for superb reliability and performance!

## **WHELEN®** Justice® Series Lightbars

The Whelen Engineering Justice light bar features low-profile, aerodynamic styling and a modular design that provides easy access to the lighting components.



High performance, cost competitive Super-LED® lightbar with a wide range of options, designed for ease of operation, upgrade and serviceability.

**MEGA-TECH**  
TOLL FREE: (800) 700-7937

7116 67 Street NW  
Edmonton, AB  
T6B 3A6  
ph.: (780) 438-9330

#1, 43877 Progress Way  
Chilliwack, BC  
V2R 0E6  
ph.: (604) 701-6342

1582 Rue Jean Lachaine  
Sainte-Catherine, QC  
J5C 1C2  
ph.: (514) 451-4568



When technology takes a step up, so do the engineers at Whelen Engineering Company! CenCom Sapphire delivers what you've been asking for in a sleek, new, tougher, more advanced design.

CenCom Sapphire adds an integrated WeCan® serial port for connecting your Whelen WeCan series lightbar directly to the Amplifier Control Module. No more bulky wires and secondary boxes to contend with. Just plug in and go!

## WHELEN® Responder® LP™ Series Mini-Lightbars



R1LPPA

Responder Series are low profile, mini-lightbars that provide all the high performance LED warning and signalling benefits in a smaller size that fits all your special applications.



R2LPPR

6 Super-LED modules: Available in all safety colors and with either conical (Con3) modules (R1LP series) or Linear-LED (Lin3) modules (R2LP).

## WHELEN® Super-LED 360 Degree Beacons



L41



L31



L32

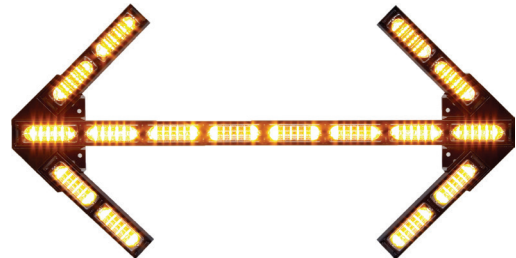


L21

The brightest 360° LED Beacons in the industry! Patent pending all new Super-LED optical design packs all the punch of strobe while retaining the superior performance characteristics of LED.

## WHELEN® Traffic Advisors

These arrows give bright, clear, direct information. Alert approaching traffic to hazardous vehicle situations and indicate correct direction with bright signal sequencing.



**MEGA-TECH**  
TOLL FREE: (800) 700-7937

7116 67 Street NW  
Edmonton, AB  
T6B 3A6  
ph.: (780) 438-9330

#1, 43877 Progress Way  
Chilliwack, BC  
V2R 0E6  
ph.: (604) 701-6342

1582 Rue Jean Lachaine  
Sainte-Catherine, QC  
J5C 1C2  
ph.: (514) 451-4568



# WHELEN® *Interceptor Solutions*

**Edge® Ultra Freedom™**  
Edge Ultra Freedom II  
Justice®  
NEW Liberty™ with DUO™ or TRIO™ technology  
Liberty

**Inner Edge®**

**ION™ Series**  
Avenger™

**Vertex™**

**License plate light bracket**  
TIR3™ Series  
LIN3™ Series  
LIN26™ Series  
ION™ Series

**HHS Siren**  
**CanTrol™ Siren**  
**295SLSA6 Siren**  
**CenCom Sapphire™ Siren**

**Inner Edge®**  
**PAR-46 Unity® Replacement**  
**SplitFire™ Ion™**  
**Avenger™**

**Vertex™**  
**TIR6™ Series**  
**LIN26™ Series**  
**ION™ Series**

**HOWLER™**  
**SA315P**

**Mirror-Beam™**  
**SideKick™**  
**M2 Series**  
**SA315P**

# WHELEN® *Interceptor Utility Solutions*

**NEW Freedom™ IV**  
**Justice®**  
**Legacy® SOLO™ & DUO™**  
**NEW Liberty™ II SOLO, DUO & TRIO™**

**IONBKT2**  
**NEW ION DUO™ & TRIO™ Series**  
**ION™ Series**  
**Avenger™**

**NEW Inner Edge® RTX**  
**Outer Edge® & Outer Edge Rear Pillar**

**Vertex™**

**NEW ION DUO™ & TRIO™ Series**  
**SlimLighter™**  
**ION Series**

**NEW Micron™ Series**  
**License plate light bracket**  
**ION Series**  
**License plate light bracket**  
**NEW Micron™ Series**  
**NEW LINV2™ V-Series™**  
**ION Surface Mount Series**

**HHS Siren**  
**Broadcaster™**  
**CanTrol™ Siren**  
**295SLSA6 Siren**  
**NEW 295SSA1 & 295SDA1 Siren**  
**CenCom Sapphire™ Siren**

**NEW Inner Edge® XLP**  
**PAR-46 Unity® Replacement**  
**SplitFire™ ION**  
**NEW Avenger™ (TRIO)**

**PEIMCT13 Interface Module**  
**Vertex™**  
**HOWLER™**  
**SA315P**

**NEW LINV2™ V-Series™**  
**NEW LINSV2 V-Series**  
**NEW Micron™ Series**  
**NEW ION DUO™ & TRIO™ Series**  
**ION™ Series**  
**NEW ION V-Series**

**COMING SOON Tracer™**  
**NEW LINSV2 V-Series**  
**Mirror-Beam™**  
**NEW Mirror-Beam ION V-Series**  
**M2 Series**  
**V23™ V-Series™**  
**3.5" Round Series**  
**NEW Micron Series**  
**License plate light bracket**  
**ION Series**  
**License plate light bracket**

**MEGA-TECH**  
TOLL FREE: (800) 700-7937

7116 67 Street NW  
Edmonton, AB  
T6B 3A6  
ph.: (780) 438-9330

#1, 43877 Progress Way  
Chilliwack, BC  
V2R 0E6  
ph.: (604) 701-6342

1582 Rue Jean Lachaine  
Sainte-Catherine, QC  
J5C 1C2  
ph.: (514) 451-4568



# WHELEN® Chevy Tahoe Solutions

**NEW Freedom™ IV**  
**Justice™**

**Legacy™ SOLO™ & DUO™**

**NEW Liberty™ II SOLO, DUO & TRIO™**

**NEW Inner Edge™ XLP**

**PAR-46 Uuliy™ Replacement**

**SpFire™ ION**

**NEW Avenger™ (TRIO)**

**NEW Inner Edge™ RTX Series**

**Outer Edge™ & Outer Edge Rear Pillar**

**NEW ION DUO™ & TRIO™ Series**

**ION™ Series**

**Vertex™**

**Taillight Flasher**

**NEW Micro™ Series License plate light bracket**

**ION Series License plate light bracket**

**NEW Micro™ Series**

**NEW LINV2™ V-Series™**

**ION™ Surface Mount Series**

**Pioneer Nano™**

**Vertex™**

**Headlight Flasher**

**NEW ION DUO™ & TRIO™ Series**

**NEW Micro™ Series**

**ION Series**

**NEW ION V-Series™**

**HOWLER™**

**SA315P**

**Micro™ Series License plate light bracket**

**ION Series License plate light bracket**

**COMING SOON Tracer™**

**Side Mirror Bracket**

**Mirror-Beam™**

**NEW LINV2 V-Series**

**M2 Series**

**V23™ V-Series**

**NEW M4 Driving/Warning Light**

**M4 Series with Fog Light Housing**

**HHS Siren**

**Broadcaster™**

**CanTron™ Siren**

**NEW 295SSA1 & 295SLA6 Siren**

**295SDA1 Siren**

**CanCom Sapphire™ Siren**

## WHELEN® MOTORCYCLE SYSTEMS

**Optional Model RBKTHD3, rear saddle bag crash bar mounting bracket kit for two TIR3, LIN3 or LINZ6 horizontal mount lightheads**

**Optional Model RBKTHD2, side saddle bag crash bar mounting bracket kit for two TIR3, LIN3 or LINZ6 horizontal mount lightheads**

**Optional Models RBKTHD4L (road side) RBKTHD4R (curb side) under radio box mounting bracket kit for one TIR3, LIN3 or LINZ6 horizontal mount lighthead**

**Optional Model RBKTHD1, windshield mounting bracket kit for one TIR3, LIN3 or LINZ6 vertical mount lighthead**

**Optional Model RBKTHD5, under headlight mounting bracket kit for one TIR3, LIN3 or LINZ6 vertical mount lighthead**

**Optional Model RBKTHD6, mounting kit for fog light, not shown.**

**MEGA-TECH**  
TOLL FREE: (800) 700-7937

7116 67 Street NW  
Edmonton, AB  
T6B 3A6  
ph.: (780) 438-9330

#1, 43877 Progress Way  
Chilliwack, BC  
V2R 0E6  
ph.: (604) 701-6342

1582 Rue Jean Lachaine  
Sainte-Catherine, QC  
J5C 1C2  
ph.: (514) 451-4568

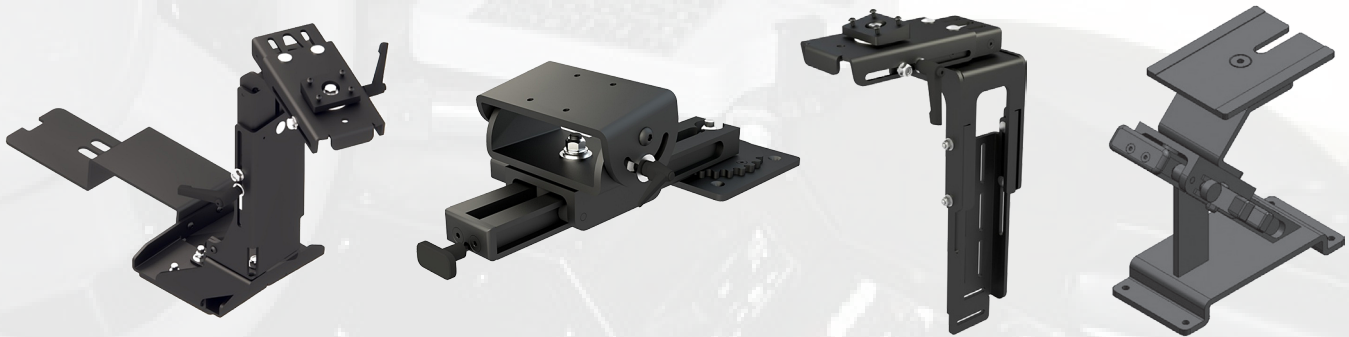


## Professional Docking Stations, Mounts and Consoles

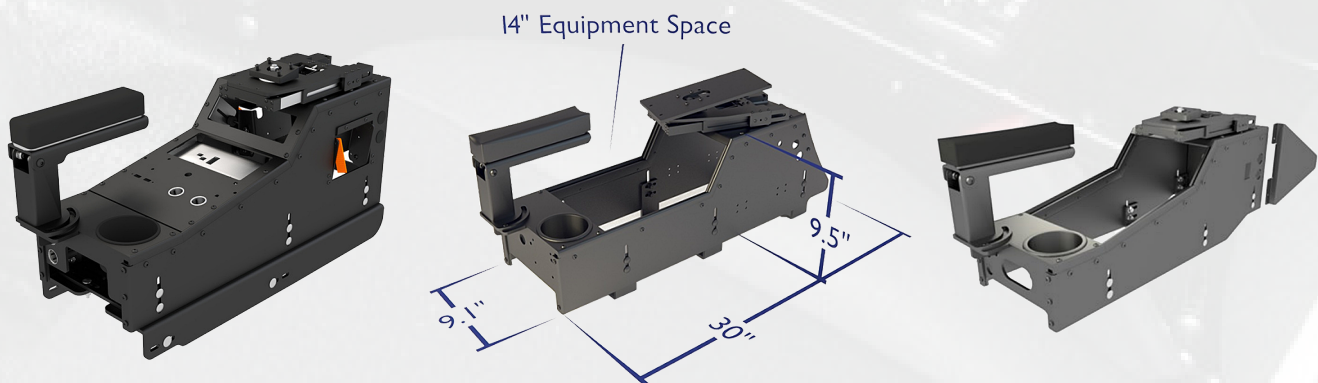
PMT is the largest North American custom builder of computer mounting systems. While there are many companies that supply mounting bracketry, none will custom build to the precise detail as PMT. The intention of PMT is to build product as desired by the customer. The only time we put the brakes on custom building is when we deem an idea may not be safe inside the confines of a vehicle.



Our docking stations are built to the highest standards in the industry. Built solely from aircraft grade aluminum, we specialize in making ergonomic, low profile, unobtrusive docks that work in today's cramped mobile offices. The circuitry in our docks comes from the OEM manufacturers, so you are assured of the very best compatibility and reliability. At PMT we manufacture docking Stations for all the major manufacturers of Laptops including: Panasonic, Dell, General Dynamics/Itronix, Getac, ...and more.



Now that you have a docking station for your laptop, you're going to need a mounting solution to accommodate your needs. This is PMT's specialty! Choose from one of our tried and tested mounts designed for today's most common vehicles, or let us custom build one for you to better suit your needs. And of course, we have mounts for more than just laptop computers. Everything from LCD screens, printers, flashlights, and more. We also manufacture mounts for all kinds of vehicles and applications, including: ATV's, RV's, Marine, desk, home, and on and on.



Built to your ergonomic needs and specific requirements. All of our consoles are made of sturdy, yet lightweight aluminum, and feature smooth corners for safety. We have standard sizes and shapes, plus countless custom built solutions for your ever changing requirements. Equip your console with whatever radio face plates, armrests, cupholders, 12vdc cig sockets etc, that you might need for a clean professional looking install.

**Docking Stations, Mounts, Consoles - PMT has your mounting solutions covered!**





**Stalker's new XLR LIDAR.**  
**Small size. Big Performance.**

The Stalker X-Series LIDAR are the smallest and lightest hand-held, gun-type lasers on the market today. At a mere 2.3 lbs. including removable/rechargeable battery handle, the X-Series may be lightest of all the hand-helds, but it's no lightweight. The new snap-in Li-Ion battery handle provides ample power to last two or more shifts. Plus, the battery can be expected to last through more than 500 charging cycles.

#### **Single-Shot and Continuous Tracking Modes**

The X-Series LIDARs have the ability to operate in three modes: single-shot, continuous tracking, or constant trigger-down mode. This allows the operator to select the mode which best suits their needs.

#### **Weather/Obstruction Mode**

The X-Series units have, as standard, a Weather/Obstruction mode which allows the unit to work in rain, snow, blowing dust, fog, as well as through fences, tree branches, etc. This also increases the operating distance when using the X-Series LIDARs through the front windshield of the patrol car.

#### **Enhanced Tracking**

The X-Series LIDARs have the ability to track a moving target through small obstructions such as a pole or parked vehicle.

#### **Poursuite audio de type Doppler**

Since most laser operators also operate radar, the X-Series LIDARs generate a continuous Doppler-type audio tone which correlates to the target speed. Just like the audio on a police radar, this audio is a substantial aid to understanding and building a target tracking history - providing a better evidentiary case for citations.

**Simple, intuitive, easy-to-use single button controls.**



HUD Light switch - allows operator to increase or decrease with a single button the HUD intensity for proper viewing in all lighting conditions.

MODE switch - allows operator to select speed and range, range only, speed only, or singleshot with a single button.

Audio switch - single-button to increase or decrease the audio tone.



- Small and Lightweight
- Fastest acquisition time
- Industry-leading range and accuracy
- Removable, high capacity, Li-Ion rechargeable battery handle
- Ergonomic, waterproof design
- Speed and distance in Heads-Up Display



#### **Motorcycle Mounting**

Motorcycle mounts available for Harley-Davidson, Honda and BMW.

**Small. Light. Powerful. Stalker.**

**MEGA-TECH**  
TOLL FREE: (800) 700-7937

7116 67 Street NW  
Edmonton, AB  
T6B 3A6  
ph.: (780) 438-9330

#1, 43877 Progress Way  
Chilliwack, BC  
V2R 0E6  
ph.: (604) 701-6342

1582 Rue Jean Lachaine  
Sainte-Catherine, QC  
J5C 1C2  
ph.: (514) 451-4568



## ***STALKER II***

### **Handheld Stationary & Moving Directional Radar**

The new Stalker II handheld radar combines the range and performance of a car-mounted radar in a versatile, hand-held package. The Stalker II is available in either moving / stationary or stationary-only versions as well as with either a cordless battery handle or a corded handle.

The Stalker II's direction sensing and moving mode capabilities allow it to go from handheld to dash mount and back to handheld without missing a step.



## ***STALKER DSR***

### **Direction Sensing Radar**

With direction sensing capabilities, the DSR is able to automatically determine if vehicles in the same lane are closing or going away from the radar. This allows the DSR to automatically measure same lane traffic speeds as simply and accurately as it does for oncoming traffic. No longer does the operator need to tell the radar if same lane traffic is closing or going away from the patrol vehicle. The Stalker is the first radar to make same lane operation simple, accurate and automatic.



## ***STALKER DSR 2X***

### **Two Fully Functional Direction Sensing Radars In One Compact Unit!**

The Stalker DSR 2X has all the same functionality of the Stalker DSR, but with the ability to monitor 4 target zones in stationary, and 2 in moving mode. Conventional moving radar can only monitor traffic in one target zone. Now, with the introduction of the Stalker DSR 2X, two moving target zones or all 4 stationary target zones can be monitored simultaneously. Stalker DSR 2X is actually two independent radar units operating on a single display.



**communications**  
Mobile-Vision, Inc



## ***Flashback 3 / Flashback HD*** **Mobile Digital Video Recording System**

The Flashback3 DVR (digital video recorder) provides crystal clear recordings of up to two cameras and three audio sources. Flashback offers pre-event recording and captures information such as vehicle number, officer name, time/date, GPS location, vehicle speed, activation of lights, siren, brakes, etc. With no moving parts, Flashback is able to sustain shock, vibration, and temperature extremes well beyond the capabilities of other in-car digital systems.

**NOW AVAILABLE - FLASHBACK HD WITH HIGH DEFINITION RECORDING**

**MEGA-TECH**  
TOLL FREE: (800) 700-7937

7116 67 Street NW  
Edmonton, AB  
T6B 3A6  
ph.: (780) 438-9330

#1, 43877 Progress Way  
Chilliwack, BC  
V2R 0E6  
ph.: (604) 701-6342

1582 Rue Jean Lachaine  
Sainte-Catherine, QC  
J5C 1C2  
ph.: (514) 451-4568





## SafePace 650 Compact Variable Message Sign

The brand new compact SafePace 650 variable message sign offers the flexibility of our full size customizable signs like the SafePace 600 and 700 in a compact, lightweight design. Displaying static Your Speed text, the sign lets you program the display to show driver speed, driver-responsive messaging, and even graphics of your choice. With all the versatility, options, and visibility of a full size sign, the SafePace 650 is 30% smaller and weighs just under 20 lbs. Choose the SafePace 650 speed display sign for a compact sign with full size impact.



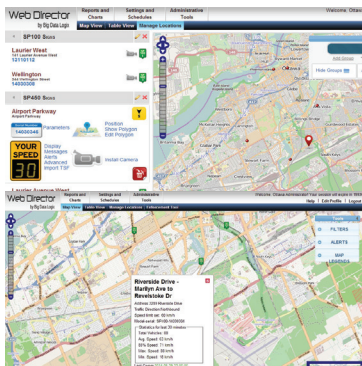
## SafePace 450 Lightweight Display Speed Sign

The SafePace 450 speed display sign offers a portable speed solution that doesn't compromise on digit size or visibility. The innovative sign displays vehicle speed in full 15" LED digits at a weight of only around 20 lbs (depending on options) and can be seen from up to 1000 feet away. Using optional battery power, the sign can function autonomously for up to two weeks. With a full range of features including user-friendly software, low power consumption, vandal resistance, and universal mounting brackets, the SafePace 450 is the lightweight sign with full size impact.



## SafePace 100 Compact Entry-Level Speed Sign

The Traffic Logix SafePace 100 is the radar sign that fits your budget. This compact radar speed sign offers exceptional visibility and power efficiency in a lightweight, portable solution. Featuring the options you need at remarkably affordable pricing, the SafePace 100 is the sign you'll want to use again and again to keep your neighborhoods safe. To see photos of the SafePace 100 sign in action, view the photo gallery.



## SafePace Cloud Powered By Web Director

SafePace Cloud Powered by Web Director technology offers you the convenience to remotely manage your SafePace signs right from your computer. With detailed reporting, customized alerts, and real-time data, you can see stats for each sign, change settings, check batteries and download data without spending time traveling to sign locations. SafePace Cloud is an investment in the performance and success of your SafePace speed signs.



## K9 Transport Systems

**SETINA** | MANUFACTURING

Not all K-9 Units are created equal. Some allow your K-9 partner to ride behind you in the back seat, giving you quick and easy access when you need critical assistance. When parked alongside a busy highway however, it may not be such a great idea to allow your partner to jump right out into traffic. Other Units solve this problem by placing a kennel in the cargo area of your SUV, but sacrifice storage for safety.

Professionally designed K-9 Kennels protect floors, doors, roof and windows from, claw marks and chewing.



## Firearms Transport

**SETINA** | MANUFACTURING

Free standing or partition mounting allows for flexibility and unlimited vertical adjustments. Available with center channel, ideal for the mounting of auxillary equipment such as a rechargeable flashlight.

The double mounting system provides quick, easy access to your shotgun, automatic weapons are less than lethal guns. Available in single, stand-alone or double mount systems.



## Total Transport Systems

**SETINA** | MANUFACTURING

Setina is the industry leader in innovation and technological advances in equipment design for all the newly designed vehicles. We offer the largest selection of equipment for all the new Ford, Dodge and GM vehicles.

- Prisoner Transport Partition
- New Full TPO Transport Seat
- Center Pull Seatbelt System
- Full Length TPO Floor Pan
- Two TPO Door Guards
- Window Guards
- Vertical Firearms Mount
- Rear Vehicle Partition
- Cargo Storage (SUV)
- Lighted Bumper



**ACARI**<sup>TM</sup>  
DRILL FREE

## No Holes Mounting Solutions for Trucks

Drill holes in the platform, NOT THE CAB ROOF. The platform securely attaches to the cab's roof with its revolutionary clamp and gasket system through the third brake light opening.

Mount your warning lights, antennas, work lights and other essential accessories without drilling any holes in your roof.

Flexibility to customize your vehicles with equipment needed for any type of job.

Eliminates lease penalties, rust, scratches and exposed wires.

**MEGA-TECH**  
TOLL FREE: (800) 700-7937

7116 67 Street NW  
Edmonton, AB  
T6B 3A6  
ph.: (780) 438-9330

#1, 43877 Progress Way  
Chilliwack, BC  
V2R 0E6  
ph.: (604) 701-6342

1582 Rue Jean Lachaine  
Sainte-Catherine, QC  
J5C 1C2  
ph.: (514) 451-4568





## STINGER Spike Systems

Put the incredible stopping power of the Stinger 2000 to work for you today!

Proven Accident Reduction - saves lives, reduces liability, lowers costs, effective without roadblocks.

Slower, Shorter, Safer Pursuits - superior control, more tires affected, safe handling.

Effective on trucks and buses - longer spikes instantly re-useable



For more info go to: <http://www.mega-tech.com/135>



## Unity Post-Mounted Spotlights



UNITY's THE BEAM post-mount spotlights offer the convenience and safety of instant aimable light when and where you want it. THE BEAM's rubber grip interior control handle with fingertip switch provides 360° continuous horizontal rotation and up to 120° of vertical adjustment. THE BEAM is available in both Black and Chrome finishes. All-in-one design allows you to use this spotlight as a search light, alley light, takedown light or a work light.

For more info go to: <http://www.mega-tech.com/137>

## WHELEN® Super-LED® Spot and Floodlights

Super-LED worklights are rated for 50,000 hours and provide remarkably bright light. Available in either spot or flood beam pattern, these versatile work lights feature stainless steel mounting hardware.



## STREAMLIGHT®



E-Flood® LiteBox® LED



Strion® LED



Stinger DS® LED



Survivor® LED

For more info go to: <http://www.mega-tech.com/123>

**MEGA-TECH**  
TOLL FREE: (800) 700-7937

7116 67 Street NW  
Edmonton, AB  
T6B 3A6  
ph.: (780) 438-9330

#1, 43877 Progress Way  
Chilliwack, BC  
V2R 0E6  
ph.: (604) 701-6342

1582 Rue Jean Lachaine  
Sainte-Catherine, QC  
J5C 1C2  
ph.: (514) 451-4568

# MEGA-TECH



## Head Office

7116 - 67th Street  
Edmonton, Alberta T6B-3A6  
Ph: (780) 438-9330  
Fax: (780) 435-7606



#1, 43887 Progress Way  
Chilliwack, BC V2R-0F6  
Ph: (604) 701-6342  
Fax: (604) 701-6343



1582 Rue Jean Lachaine  
Sainte-Catherine, QC J5C 1C2  
Ph: (450) 845-4123  
Fax: (450) 845-6494